

Monday, June 11th

Endovascular Fellows Course

**Tuesday, June 12th &
Wednesday, June 13th**

LINC Mount Sinai
Endovascular Symposium



Thursday, June 14th

Coronary / Structural Heart Symposium

Friday, June 15th

Interventional Cardiology Board Review
Nurse / Technologist Symposium

**CORONARY / STRUCTURAL HEART
SYMPOSIUM DIRECTORS**

Samin K. Sharma, MD, FACC, FSCAI
Annapoorna S. Kini, MD, MRCP, FACC
Roxana Mehran, MD, FACC, FESC

CO-DIRECTORS

Usman Baber, MD, MS
Nitin Barman, MD, FACC
George Dangas, MD, PhD, FACC, MSCAI
Jason Kovacic, MD, PhD, FACC, FSCAI
Pedro R. Moreno, MD, FACC
Joseph M. Sweeney, MD, FACC
Gilbert Tang, MD, MSc, MBA, FRCSC, FACC

**ENDOVASCULAR
SYMPOSIUM DIRECTORS**

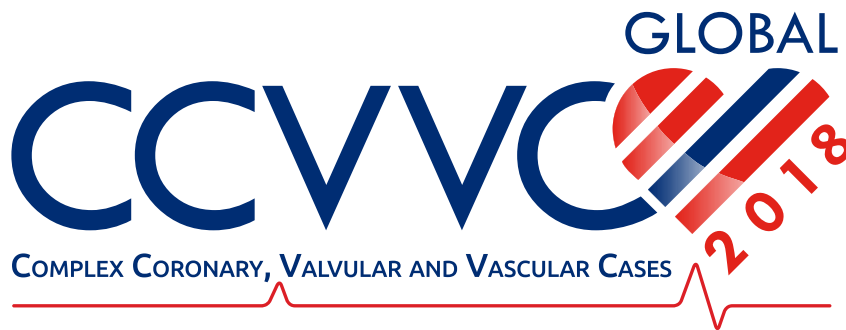
Prakash Krishnan, MD, FACC
Dierk Scheinert, MD

CO-DIRECTORS

J. Michael Bacharach, MD, MPH, FACC, FSCAI
Giancarlo Biamino, MD, PhD
Peter L. Faries, MD
Robert A. Lookstein, MD
James F. McKinsey, MD, FACS
Andrej Schmidt, MD
Giovanni Torsello, MD, PhD

**NURSE / TECHNOLOGIST
SYMPOSIUM DIRECTOR**

Beth Oliver, DNP, RN



***Special Focus on Calcified, Bifurcation
& Total Occlusion Lesions***

JUNE 12-15, 2018
New York, New York



**Hosted by the Dr. Samin K. Sharma
Family Foundation Cardiac Catheterization Laboratory**



Celebrating
50
years
1968-2018



Icahn School
of Medicine at
Mount
Sinai

Innovation in Science and Medicine



Dear Colleague,

We would like to welcome you to the 21st annual

Complex Coronary, Valvular and Vascular Cases Symposium

The field of Interventional Cardiology is evolving with Structural Heart Disease intervention and Endovascular intervention taking the center stage. Percutaneous intervention continues to evolve with the rapid growth of established and new technology supplemented constantly by the results of the latest randomized trials and registries, with the common goal of improving procedural efficiency, safety and outcomes. As practicing interventionalists, our knowledge should remain current to appropriately treat coronary, valvular, and peripheral vascular disease based on the available devices, therapy and trial results. Hence, we need to participate in continuing educational activities to get the latest updates. The cost-effectiveness of new techniques or technology always needs to be weighed against the established practices, before making any decision in our daily practice. We plan to present the interventional format consistent with the guidelines published on the particular disease process.

That is exactly what we plan to achieve in our four-day Complex Coronary, Valvular and Vascular Cases Symposium (CCVVC); to present concise and current important information that will update you on the latest techniques and technologies and help clarify emerging areas of diagnostic and therapeutic controversy. To cover all the emerging areas in the field of intervention, we have dedicated separate days to topics of endovascular intervention on June 12th and 13th and coronary intervention and structural heart disease intervention on June 14th. We will continue to offer recent updates of various operational topics encountered in the Cath Lab daily in a dedicated one day Nurse Technologist Symposium on June 15th.

The primary focus of this course is to present a multi-device approach to complex revascularization in patients with complex coronary, structural heart and endovascular disease. Various novel interventional devices such as transcatheter aortic-valve replacement (TAVR) and techniques such as retrograde CTO recanalization, atherectomy for severely calcified lesions and dedicated bifurcation stenting will be demonstrated using live case presentations as a platform for discussion by the operators, panelists and audience. The program is complemented by unbiased commentary of live cases by world renowned experts and discussions intended to bring out general consensus regarding the most effective appropriate strategy that you can apply immediately in your practice.

In addition, the course will present common topics of controversy we frequently encounter in the field of interventional cardiovascular medicine in the form of points and counterpoints. There will be selected lectures on various topics of interventional cardiology by the global world experts. These updates will supplement the live cases with an up-to-date, comprehensive review of the most important and controversial topics of the current year.

We are committed to offer the 2018 Live Symposium as a platform for continued innovation in interventional cardiovascular medicine with the main interest of achieving safe procedural outcomes and strong emphasis on the appropriateness of the revascularization choice.

We look forward to seeing you at this year's symposium!

Sincerely,

Coronary/Structural Heart Symposium Directors

Samin K. Sharma, MD, FACC, FSCAI

Director, Clinical and Interventional Cardiology
President, Mount Sinai Heart Network
Dean of International Clinical Affiliations
Anandi Lal Sharma Professor of Medicine
The Mount Sinai Hospital, New York, New York



Annapoorna S. Kini, MD, MRCP, FACC

Director, Cardiac Catheterization Laboratory
Interventional Director, Structural Heart Program
Director, Interventional Cardiology Fellowship Program
Zena and Michael A. Weiner Professor of Medicine
The Mount Sinai Hospital, New York, New York



Roxana Mehran, MD, FACC, FESC

Director, Interventional Cardiovascular
Research and Clinical Trials
Professor of Medicine, Cardiology
Professor of Population Health Science and Policy
The Mount Sinai Hospital, New York, New York



Symposium Overview

The primary focus of this course is to present a multi-device approach to complex revascularization in patients with complex coronary, valvular and peripheral vascular disease. Various invasive imaging of fractional flow reserve (FFR), instant wave-free ratio (iFR), intravascular ultrasound (IVUS), and Optical Coherence Tomography (OCT), in guiding interventions will be discussed and emphasized on the case-by-case basis. Various novel interventional devices and techniques such as orbital atherectomy, alcohol septal ablation, valvuloplasty, percutaneous valve replacement and complex peripheral vascular intervention will be emphasized. Technical issues regarding retrograde CTO recanalization and various bifurcation interventions will be demonstrated using the live case format. Treatment of emerging problems, such as unprotected left main disease, heavily calcified lesions, bifurcation lesions, total occlusions, recurrent in-stent restenosis, severe diffuse stenosis, carotid and peripheral lesions will be emphasized by the faculty using live case presentations as platforms for discussion.

Appropriateness of a revascularization choice and evidence-based practice guidelines will be discussed while simple and complex live cases are being performed. Within the live case format, current topics will be presented to provide interventional cardiologists and vascular interventionalists with state-of-the-art information for managing patients as the dynamic field of interventional cardiology and endovascular intervention continues to evolve. Through discussion and viewing of live cases, we expect to emphasize the long-term role of interventional cardiology in managing particular lesion subsets via specific device procedures.

Highlights

- TECHNICAL PEARLS IN TREATING CALCIFIED LESIONS USING AVAILABLE ATHERECTOMY DEVICES
- BIFURCATION LESION INTERVENTION USING 1 OR 2-STENT STRATEGY
- CHRONIC TOTAL OCCLUSION STRATEGIES INCLUDING RETROGRADE APPROACH
- MINIMALLY INVASIVE TAVR TECHNIQUES
- EMERGING ENDOVASCULAR INTERVENTIONS OF COMPLEX PERIPHERAL ARTERIAL AND VENOUS DISEASE

Target Audience

This course is specifically designed for:

- Interventional Cardiologists who manage patients with complex, challenging anatomy for revascularization
- Interventional Radiologists and Vascular Surgeons
- Cardiology Fellows with an interest in Interventional Cardiology
- Nurses, Technicians, and other Allied Health Care Professionals who work in Cardiac Catheterization and Vascular Laboratories

Educational Objectives

The overall goal of this program is to enhance knowledge and improve understanding of various interventional techniques and devices with management of various cardiac disease states.

At the conclusion of this activity, participants will be able to:

- Select the appropriate revascularization strategy for patients with unprotected left main disease.
- Select the best interventional strategy for coronary bifurcation lesions, use of one versus two stent approach.
- Apply case selection and choose the appropriate interventional devices for endovascular interventions using atherectomy, drug coated balloon, stents along with embolic filter protection.
- Select the appropriate cases for Transcatheter Aortic Valve Replacement (TAVR) or Surgical Aortic Valve Replacement (SAVR) for low-to-intermediate risk aortic stenosis.

Accreditation

Coronary / Structural Heart Symposium and LINC Mount Sinai

The Icahn School of Medicine at Mount Sinai is accredited by the Accreditation Council for Continuing Medical Education to provide continuing medical education for physicians.

Credit Designation

The Icahn School of Medicine at Mount Sinai designates this live activity for a maximum of 26.0 *AMA PRA Category 1 Credits*™. Physicians should claim only the credit commensurate with the extent of their participation in the activity.

LINC Mount Sinai

Tuesday - Wednesday, June 12th -13th, 16.75 credits

Coronary / Structural Heart Symposium

Thursday, June 14th, 9.25 credits

Nurse / Technologist Symposium

This educational activity will be submitted to the Alliance of Cardiovascular Professionals, Cardiovascular and Pulmonary Continuing Education (CaPCE) for approval of up to 6.75 contact hours of accredited education.

Verification of Attendance

Verification of attendance will be provided to all professionals.

Faculty Disclosure

It is the policy of The Icahn School of Medicine at Mount Sinai to ensure objectivity, balance, independence, transparency, and scientific rigor in all CME sponsored educational activities. All faculty participating in the planning or implementation of a sponsored activity are expected to disclose to the audience any relevant financial relationships and to assist in resolving any conflict of interest that may arise from the relationship. Presenters must also make a meaningful disclosure to the audience of their discussions of unlabeled or unapproved drugs or devices. This information will be available as part of the course materials.

Special Needs

The Icahn School of Medicine at Mount Sinai is in full compliance with provisions of the Americans with Disabilities Act (ADA) and is accessible for individuals with special needs. If you would like to attend this conference and require any special accommodations, please contact the Icahn School of Medicine at Mount Sinai at (212) 731-7950.

2018 Coronary Faculty

Directors

Samin K. Sharma, MD, FACC, FSCAI

Director, Clinical and Interventional Cardiology
President, Mount Sinai Heart Network
Dean of International Clinical Affiliations
Anandi Lal Sharma Professor of Medicine
The Mount Sinai Hospital, New York, New York

Annapoorna S. Kini, MD, MRCP, FACC

Director, Cardiac Catheterization Laboratory
Interventional Director, Structural Heart Program
Director, Interventional Cardiology Fellowship Program
Zena and Michael A. Weiner Professor of Medicine
The Mount Sinai Hospital, New York, New York

Roxana Mehran, MD, FACC, FESC

Director, Interventional Cardiovascular
Research and Clinical Trials
Professor of Medicine, Cardiology
Professor of Population Health Science and Policy
The Mount Sinai Hospital, New York, New York

Coronary & Structural Heart Mount Sinai Co-Directors

Usman Baber, MD, MS

Director of Clinical Biometrics
Assistant Professor of Medicine, Cardiology

Nitin Barman, MD, FACC

Director, ADS Telemetry
Assistant Professor of Medicine, Cardiology

George Dangas, MD, PhD, FACC, MSCAI

Director, Cardiovascular Innovation
Professor of Cardiology & Vascular Surgery

Jason Kovacic, MD, PhD, FACC, FSCAI

Associate Director, Interventional Structural Heart Program
Associate Professor of Medicine, Cardiology

Pedro R. Moreno, MD, FACC

Director, Cardiac Cath Lab, Mount Sinai St. Luke's
Professor of Medicine, Cardiology

Joseph M. Sweeney, MD, FACC

Medical Director, The Lauder Ambulatory Cardiovascular Center
Assistant Professor of Cardiology

Gilbert Tang, MD, MSc, MBA, FRCSC, FACC

Surgical Director, Structural Heart Program
Assistant Professor Cardiovascular Surgery

Coronary & Structural Heart Mount Sinai Health System Faculty

Valentin Fuster, MD, PhD

Director, Mount Sinai Heart
Physician in Chief, Mount Sinai Medical Center
Professor of Medicine, Cardiology

John Fox, MD, FSCAI

Associate Professor of Medicine, Cardiology

Jacob Kamen, PhD, MS, CMLSO, CHP

Chief Radiation Safety Officer
Associate Professor of Radiology

Tak Kwan, MD

Clinical Professor, Medicine, Cardiology

Coronary & Structural Heart International Faculty

Alexandre Abizaid, MD, PhD, FACC

Dante Pazzanese Institute of Cardiology
Sao Paulo, Brazil

Roberto Botelho, MD, PhD

Uberlandia Medical Center
Uberlandia, Brazil

Praveen Chandra, MD, FACC, FSCAI

Medanta The Medcity
Gurgaon, India

Antonio Colombo, MD, FACC, FSCAI

EMO GVM Centro Cuore Columbus and San Raffaele Hospital
Milan, Italy

Jamshed Dalal, MD, PhD, FRCP

Kokilaben Hospital
Mumbai, Maharashtra, India

Carlo Di Mario, MD, PhD, FACC

Careggi University Hospital
Florence, Italy

Eberhard Grube, MD

Siegburg Heart Centre
Siegburg, Germany

Shirish Hiremath, MD

Ruby Hall Clinic
Pune, India

Josep Rodés-Cabau, MD

Quebec Heart and Lung Institute
Quebec City, Quebec, Canada

Mathew Samuel K., MD, DM, FACC, FSCAI, FESC

Apollo Hospitals
Chennai, Tamil Nadu, India

Satyavan Sharma, MD, DM, FACC, FAMS, FESC, FSCAI

Bombay Hospital and Medical Research Centre
Mumbai, India

Gian Paolo Ussia, MD, FACC, FSCAI

University of Rome Tor Vergata
Rome, Italy

Coronary & Structural Heart Symposium Guest Faculty

Deepak L. Bhatt, MD, MPH

Massachusetts General Hospital
Boston, Massachusetts

Daniel Burkhoff, MD, PhD

Cardiovascular Research Foundation
New York, New York

Jeffrey Chambers, MD, FACC

Mercy Hospital
Minneapolis, Minnesota

Cindy L. Grines, MD, FACC, FSCAI

North Shore University Hospital
New York, New York

Mayra Guerrero, MD

Evanston Hospital
Evanston, Illinois

Michael C. Kim, MD, FACC, FSCAI

Lenox Hill Heart and Vascular Institute
New York, New York

Ajay J. Kirtane, MD, SM, FACC, FSCAI

New York-Presbyterian Hospital
New York, New York

John M. Lasala, MD, PhD, FACC, FSCAI

Washington University School of Medicine
St. Louis, Missouri

Amir Lerman, MD

Mayo Clinic
Rochester, Minnesota

Raj Makkar, MD, FACC

Cedars-Sinai Medical Center
Los Angeles, California

Sameer Mehta, MD, FACC, MBA

Lumen Foundation
Miami, Florida

Sunil V. Rao, MD, FACC, FSCAI

Duke University Health System
Chapel Hill, North Carolina

Mark Reisman, MD, FACC

UW Medicine Regional Heart Center
Seattle, Washington

Arthur Reitman, MD, FACC

WellStar Health System
Marietta, Georgia

Charanjit S. Rihal, MD

Mayo Clinic
Rochester, Minnesota

David G. Rizik, MD, FACC, FSCAI

HonorHealth Heart Group
Scottsdale, Arizona

Jasvinder Singh, MD, FACC

Barnes-Jewish Hospital, St. Louis
St. Louis, Missouri

Paul Teirstein, MD

Scripps Clinic
La Jolla, California

Ron Waksman, MD, FACC, FSCAI

MedStar Heart and Vascular Institute
Washington, DC

Robert Yeh, MD, MSc

Beth Israel Deaconess Medical Center, Harvard Medical School
Boston, Massachusetts



Coronary/Structural Heart Agenda

Wednesday, June 13, 2018

6:00 pm – 8:00 pm **Symposium Pre-Registration**
Sheraton Times Square Hotel

Thursday, June 14, 2018

7:00 am **REGISTRATION/CONTINENTAL BREAKFAST**
Stern Auditorium

7:40 am **WELCOME AND INTRODUCTION**
Top Ten Advances of Interventional Cardiology 2017
Samin K. Sharma, MD

8:15 am **Imaging, Omics and Behavior as Basis of Cardiovascular Health**
Valentin Fuster, MD, PhD

8:45 am **LIVE CASE PRESENTATIONS #1, #2, #3 and #4**
Left Main Disease and SAPIEN-3 TAVR
Moderator: *Roxana Mehran, MD*
Panelists: *Alexandre Abizaid, MD, PhD; Antonio Colombo, MD; Eberhard Grube, MD; John M. Lasala, MD, PhD; Raj Makkar, MD; Mark Reisman, MD; Charanjit S. Rihal, MD; Mathew Samuel K., MD; Paul Teirstein, MD*

10:00 am **BREAK / VISIT EXHIBITS**

10:15 am **CORONARY INTERVENTIONS: POINTS AND COUNTERPOINTS**

- **LM Bifurcation PCI:**
Single Stent in Majority *Cindy L. Grines, MD*
Two Stents in Majority *Paul Teirstein, MD*
- **BVS/BRS Technology:**
Will Disappear *Mathew Samuel K., MD*
Will Be Revived *Alexandre Abizaid, MD, PhD*
- **Coronary Physiology:**
FFR Has the Best Data *Charanjit S. Rihal, MD*
iFR is "Simply the Best!" *Carlo Di Mario, MD, PhD*
- **CTO Interventions:**
Successful Recanalization is Better ... *Jasvinder Singh, MD*
No Benefit for PCI *Praveen Chandra, MD*

11:20 am **KEYNOTE LECTURE #1**
Interventional Cardiology 2018 and Beyond: A Promising Landscape Ahead
Antonio Colombo, MD

11:40 am **KEYNOTE LECTURE #2**
Structural Heart Transcatheter Intervention: Will Be the Default Therapy in the Near Future!
Eberhard Grube, MD

11:55 am **LIVE CASE PRESENTATIONS #5, #6 and #7**
Calcified and Bifurcation Lesions, LV Support and Evolute-PRO TAVR
Moderator: *Roxana Mehran, MD*
Panelists: *Roberto Botelho, MD, PhD; Jeffrey W. Chambers, MD; John Fox, MD; Cindy L. Grines, MD; Mark Reisman, MD; David G. Rizik, MD; Jasvinder Singh, MD; Gian Paolo Ussia, MD; Ron Waksman, MD*



12:55 pm **LUNCH / VISIT EXHIBITS**

1:55 pm **STRUCTURAL HEART DISEASE INTERVENTION: POINTS AND COUNTERPOINTS**

- **TAVR Indications:**
Good for All Risks *Raj Makkar, MD*
Low Risk May Be Too Risky *Gian Paolo Ussia, MD*
- **TMVR Indications:**
Growing Rapidly *Mayra Guerrero, MD*
Still Need to Be Cautious *Josep Rodès-Cabau, MD*

2:30 pm **LIVE CASE PRESENTATIONS #8, #9, #10 and #11**
CTO, Calcific Lesions, Radial Intervention
Moderator: *Roxana Mehran, MD*
Panelists: *Roberto Botelho, MD, PhD; Praveen Chandra, MD; Carlo Di Mario, MD, PhD; Shirish Hiremath, MD; Michael C. Kim, MD; Tak Kwan, MD; Sameer Mehta, MD; Sunil V. Rao, MD; Satyavan Sharma, MD*

3:30 pm **BREAK / VISIT EXHIBITS**

3:45 pm **INTERVENTIONAL STRATEGY: POINTS AND COUNTERPOINTS**

- **Stable CAD:**
Limited/No Benefit for PCI: ORBITA Trial ... *Deepak L. Bhatt, MD*
PCI Still Beneficial *Ajay J. Kirtane, MD*
- **Severely Calcified Lesions:**
Atherectomy is a Must *Mark Reisman, MD*
Atherectomy Only as a Bailout ... *Robert Botelho, MD, PhD*
- **DAPT Duration Post DES:**
3-6 Months Will Suffice *Ron Waksman, MD*
Longer is Still an Option for Many! ... *Roxana Mehran, MD*
- **Newer P2 Y12 Inhibitors in ACS PCI:**
Losing Ground Due to Bleeding *Sunil V. Rao, MD*
One Year is a Must in Most! *Robert W. Yeh, MD*

4:50 pm **LIVE CASE PRESENTATIONS #12, #13 and #14**
Bifurcation Lesions, Alcohol Septal Ablation, SAPIEN-3 TAVR
Moderator: *George Dangas, MD, PhD*
Panelists: *Deepak L. Bhatt, MD; Jamshed Dalal, MD, PhD; Mayra Guerrero, MD; Ajay J. Kirtane, MD; Sameer Mehta, MD; Arthur B. Reitman, MD; Josep Rodès-Cabau, MD; Gilbert Tang, MD; Ron Waksman, MD; Robert W. Yeh, MD*

5:50 pm **Concluding Remarks and Future Directions**
Samin K. Sharma, MD and Annapoorna S. Kini, MD

7:00 pm **GALA SOCIAL EVENT**
(Buses Depart the Sheraton NY Times Square Hotel at 6:40 pm)

Interventional Cardiology Board Review*

Friday, June 15, 2018

Fellows Course Directors

Samin K. Sharma, MD, FACC, FSCAI

Director, Clinical and Interventional Cardiology
President, Mount Sinai Heart Network
Dean of International Clinical Affiliations
Anandi Lal Sharma Professor of Medicine
The Mount Sinai Hospital, New York, New York

Annapoorna S. Kini, MD, MRCP, FACC

Director, Cardiac Catheterization Laboratory
Interventional Director, Structural Heart Program
Director, Interventional Cardiology Fellowship Program
Zena and Michael A. Weiner Professor of Medicine
The Mount Sinai Hospital, New York, New York



Overview

The 2018 Interventional Cardiology Board Review is a one-day course in which the advanced trainee in Interventional Cardiology is exposed to all facets of complex heart disease and coronary intervention. The format will consist of didactic lectures, case presentations and Q&A with ample opportunities for fellows to interact with the faculty members, who are pioneers in the field. The Interventional Board Review Course will offer in-depth coverage of all the major aspects in today's practice of interventional cardiology, including all major topics of coronary, valvular and structural heart disease. This course will be held in conjunction with the Complex Coronary and Structural Heart Live Symposium, which will show 14 exemplary live cases on Thursday, June 14th.

Registration Fees Waived For Fellows!

**Board Review Course is not accredited for Continuing Medical Education (CME).*

Highlights

- Coronary Atherosclerosis
- Coronary Anatomy and Imaging
- Update of Interventional Trials
- Choice of Coronary Revascularization

Target Audience

This course is specifically designed for:

- Interventional Cardiology Fellows
- Fellows accepted for Interventional Cardiology Fellowships
- Cardiologists preparing for Interventional Cardiology Board

Location

The Mount Sinai Hospital
Hatch Auditorium
1468 Madison Avenue (100th St)
New York, New York

Registration

Registration is limited to 100 registrants and will be confirmed on a first-come, first-served basis. Hotel accommodations at the Sheraton New York Times Square Hotel for the nights of Wednesday, June 13th, Thursday, June 14th and Friday, June 15th will be covered for out-of-town Fellow attendees, along with a round-trip coach airline ticket. Attendance at the Coronary / Structural Symposium on Thursday, June 14th is required. Full registration fees for the Complex Coronary Valvular & Vascular Symposium are waived.

TAVR Simulator Training by Medtronic and Impella Simulator Training by Abiomed

Agenda | Friday, June 15, 2018

- 8:30 am Registration / Continental Breakfast**
Hatch Auditorium
- 9:15 am Welcome & Introduction** *Annapoorna S. Kini, MD*
- 9:30 am Coronary Anatomy; Physiology and Imaging** . . . *Annapoorna S. Kini, MD*
- 10:00 am Radiation Physics and Safety Within the Cath Lab** *Jacob Kamen, PhD*
- 10:30 am Understanding Coronary Atherosclerosis** *Pedro R. Moreno, MD*
- 11:00 am Contrast-Induced Nephropathy** *Roxana Mehran, MD*
- 11:30 am Antiplatelet Therapy** *Joseph M. Sweeny, MD*
- 12:00 pm LUNCH / VISIT EXHIBITS**
- 12:30 pm Appropriateness of Coronary Revascularization** . . . *Usman Baber, MD*
- 1:00 pm Indication of TAVR and MitraClip** *Annapoorna S. Kini, MD*
- 1:30 pm Guidewire and CTO Techniques** *Samin K. Sharma, MD*
- 2:00 pm LV Support During PCI** *Jason Kovacic, MD, PhD*
- 2:30 pm Radial Intervention** *Nitin Barman, MD*
- 3:00 pm Interventional Trials** *Samin K. Sharma, MD*
- 4:00 pm TAVR Simulator Training by Medtronic and Abiomed**
Lobby, Hatch Auditorium
- 5:00 pm Closing Remarks / Course Conclusion**

Board Review Course is not accredited for Continuing Medical Education (CME).



Nurse / Technologist Symposium Agenda

Friday, June 15, 2018

- 8:00 am** **Registration / Continental Breakfast**
Stern Auditorium
- 8:30 am** **Interdisciplinary Teamwork:
The Key to The Best Outcomes for PCI Patients**
Beth Oliver, DNP, RN
- 8:50 am** **Top Ten Advances of Interventional Cardiology 2017**
Samir K. Sharma, MD
- 9:20 am** **DAPT After PCI: Controversies and Perspectives**
Usman Baber, MD
- 9:40 am** **Percutaneous Mechanical Circulatory
Devices in Cardiogenic Shock**
Pablo Enriquez, CVT
- 9:55 am** **BREAK / VISIT EXHIBITS**
Training Workshop - Impella/IABP
Kamran Babri, CVT / Henley Wu, CVT
- 10:25 am** **Intravascular Imaging in the Cath Lab**
Yuliya Vengrenyuk, PhD
- 10:40 am** **Peripheral Vascular Disease Treatment:
Past, Present, and Future**
Rheoneil Lascano, NP
- 10:55 am** **Get with the Guidelines:
Pre-Procedural Cardiac Evaluation**
Jennifer Del Campo, MSN, FNP-C, CCRN, CMC
- 11:10 am** **Bifurcation Intervention: Bifurcated App**
Samir Bhatheja, MD
- 11:30 am** **Mission Lifeline: STEMI Pathways**
Haydee Garcia, ACNP-BC
- 11:45 am** **LUNCH / VISIT EXHIBITS**
- 12:45 pm** **Structural Heart Disease:
Transcatheter Interventions**
Annapoorna S. Kini, MD
- 1:10 pm** **Health Promotion in Cardiac Patients**
Mary Ann McLaughlin, MD
- 1:30 pm** **Lipid Management, Statins,
and New Therapies on the Horizon**
Gloria Manzanilla, RN, MA, ACNP
- 1:45 pm** **BREAK / VISIT EXHIBITS**
Training Workshop: IVUS/FFR/OCT
Henley Wu, CVT / Kamran Babri, CVT
- 2:15 pm** **Cardiac Rehabilitation Post PCI**
Ashley D'Armiento, RN
- 2:30 pm** **Radial Intervention Update**
Nitin Barman, MD
- 2:50 pm** **Cardiac Imaging: CTA/Angiography as a Screening Tool**
Harvey Hecht, MD
- 3:10 pm** **Closing Remarks and Raffle**

NURSE / TECHNOLOGIST SYMPOSIUM DIRECTOR

Beth Oliver, DNP, RN

Senior Vice President of Cardiac Services
for the Mount Sinai Health System
New York, New York



Dear Colleague,

***We would like to welcome you to our Endovascular Symposium LINC Mount Sinai
Being held in conjunction with the 21st annual Complex Coronary, Valvular and Vascular Cases Symposium***

LINC Mount Sinai intends to offer an open platform for discussion of new methods and technologies for every day solutions in the field of Endovascular Interventions. Our goal is to create an interdisciplinary forum and illustrate the most effective approach in the management of PAD.

We will achieve this by bringing together colleagues of different specialties from across the country and abroad, who perform endovascular interventions. This two-day course will focus on presenting concise and current information via a didactic format that will feature live cases transmitted from centers in Germany and the USA and lectures that will update you with the latest techniques and technologies.

The focus of LINC Mount Sinai is on lower extremity peripheral artery disease (PAD), critical limb ischemia (CLI), aortic disease and venous disease. Live case demonstration in a "How To" format will be performed in the "Scrub in with the Experts" forum, which will be a highlight of our symposium. The annual conference provides educational sessions for endovascular specialists, podiatrists, family physicians, nurses and cath lab technologists with specific accreditations for each specialty.

Educational Objectives

- Discuss the indications, risks and complications of interventional therapies in the treatment of cardiovascular disease, peripheral artery disease, Venous and Aortic disease.
- Understand and implement contemporary approaches in peripheral vascular management (including carotid, renal and mesenteric, SFA, below the knee, venous disease and aortic) based on recent clinical trials and evidenced based data.
- Learn and apply appropriate techniques for performing advanced endovascular interventions for patients with vascular disease.
- Describe appropriate pharmacologic management in the care of patients with cardiovascular disease and PAD.
- Discuss various testing modalities and comprehensive spectrum of care in patients with foot ulcers and threatened limbs.
- Explain proper use and interpretation of diagnostic tools and apply appropriate screening techniques for peripheral artery disease.
- Recognize the roles and responsibilities of multidisciplinary members of a comprehensive PAD clinical team.

Attendee Experience

LINC Mount Sinai, in conjunction with CCVVC, brings together a diverse group of healthcare professionals working together to improve patient care for those facing cardiovascular disease. The meeting offers healthcare professionals the opportunity to hear the latest developments in patient care, and connect with their peers and course faculty at both formal and informal events throughout the conference.

Educational opportunities during the conference will include:

- Didactic lectures from physician leaders selected for appeal to the conference's multidisciplinary audience.
- Live case broadcasts in HD, with discussion between panelists, case operators and audience members.
- Industry-sponsored sessions (not accredited for CME) on hot topics related to treatment of PAD, Venous and Aortic Disease.
- Specialty-specific sessions for family care physicians, wound care specialists, podiatrists, nurses and cath lab specialists.

Along with educational opportunities, the LINC Mount Sinai also offers attendees a variety of networking opportunities:

- Interaction with multiple industry partners who specialize in the field of Cardiovascular and Endovascular Medicine.
- Access to Internationally renowned faculty members during all meal functions.
- The meeting also showcases New York City, from the friendly atmosphere to delicious cuisine served throughout the conference.

We look forward to seeing you at this year's LINC Mount Sinai!

Sincerely,

Endovascular Symposium Directors



Prakash Krishnan, MD, FACC

Director, Endovascular Services
Cardiac Catheterization Laboratory
Associate Professor of Medicine, Cardiology
The Mount Sinai Hospital
New York, New York



Dierk Scheinert, MD

Head of the Department of Angiology
University Hospital Leipzig Heart Center
Leipzig, Germany

To view a full agenda, faculty, or register visit: www.LINCMountSinai.org

Endovascular Fellows Course

Monday, June 11, 2018

Director

Prakash Krishnan, MD, FACC
Director, Endovascular Services
Cardiac Catheterization Laboratory
Associate Professor Medicine, Cardiology
The Mount Sinai Hospital, New York, New York

Co-Directors

Vishal Kapur, MD, FACC, FSCAI
Karthik Gujja, MD, MPH
Bhaskar Purushottam, MD

Overview

The 2018 Endovascular Fellows Course is a one-day meeting in which the advanced trainee in Interventional Cardiology, Interventional Radiology and Vascular Surgery is exposed to all facets of complex vascular disease and endovascular intervention. The faculty includes many of the acknowledged pioneers in the field. The format will consist of didactic lectures and simulators with ample opportunity to interact with faculty. The Endovascular Fellows Course will offer in-depth coverage of all the major aspects in today's practice of vascular and endovascular medicine. This course will be followed by the LINC Mount Sinai Symposium, which will show exemplary live cases on Tuesday, June 12th and Wednesday, June 13th.

Location

CONVENE CONFERENCE CENTER, Times Square, 23rd Floor
810 7th Avenue (between 52nd and 53rd Street), New York, NY

The Fellows Course and Cadaver Lab are not accredited for Continuing Medical Education (CME).

Target Audience

The program is intended primarily for Interventional Vascular, Radiology or 3rd Year General Cardiology Fellows who have been accepted into an Interventional Cardiology Program.

- Interventional Cardiology Fellows
- Vascular Surgery Fellows
- Radiology Fellows
- Vascular Medicine Fellows

Registration

Registration is limited and will be confirmed on a first-come, first-served basis. Scholarships will be offered to defray costs of hotel and airfare for fellows coming from out-of-town. Please visit the symposium website for more information.

Attendance at Tuesday, June 12th and Wednesday, June 13th is required, full registration fees for the LINC Mount Sinai and CCVVC are waived.

Registration Fees Waived For Fellows!

Cadaver Lab

***Learn Ultrasound Guided Pedal Access**

***Practice Supera® Stent Deployment**

Supported By:  **Abbott**

Highlights

- Case-Based Discussions
- Venous Disease
- Wound Care Discussion
- Simulator Workshop
- Critical Limb Ischemia

Agenda | Monday, June 11, 2018

7:00 am Registration and Continental Breakfast
7:30 am Welcome and Introduction Prakash Krishnan, MD

Session Title TBD | Moderator: TBD

7:35 am Role of Non-Invasive Testing in PAD and Venous Disease (Physiologic/Ultrasound Anatomy) . . . Daniella Kadian-Dodov, MD
7:55 am Role of CT and MRI in PAD and Venous Disease Javier Sanz, MD
8:10 am Q&A

ILIAC AND ANEURYSMAL DISEASE | Moderator: TBD

8:15 pm Contemporary Data Review on Available Therapies for Iliac Artery Disease Peter L. Smith, MD
8:25 am Principles of Endovascular Therapy for Symptomatic Iliac Disease Prakash Krishnan, MD
8:35 am Case Presentation 1 - Iliac Artery Stenosis
Case Presentation 2 - Iliac Artery Occlusion Sachin Jain, MD
8:55 am Fellows Case Presentation 1
Panelists: Rajiv K. Chander, MD; Sachin Jain, MD; Peter L. Smith, MD; Rami O. Tadros, MD
9:05 am Fellow Case Presentation 2
Panelists: Rajiv K. Chander, MD; Sachin Jain, MD; Peter L. Smith, MD; Rami O. Tadros, MD
9:15 am Abdominal Aortic Aneurysm: Contemporary Endovascular Therapy Rajiv K. Chander, MD
9:25 am Thoracic Aortic Aneurysms: Endovascular Options Rami O. Tadros, MD
9:35 am BREAK / VISIT SIMULATORS & EXHIBITS

SFA/POPLITEAL DISEASE | Moderator: TBD

9:40 am Review of Contemporary Data for Management Options in SFA/Popliteal Disease . . . Sahil A. Parikh, MD
9:50 am Access Options and Principles of SFA CTO Crossing Bhaskar Purushottam, MD
10:00 am Case Presentation 1: SFA CTO Sahil A. Parikh, MD
10:10 am Case Presentation 2: Calcified SFA Vishal Kapur, MD
10:20 am Case Presentation 3: SFA ISR Karthik Gujja, MD
10:30 am Fellows Case Presentation 3
Panelists: Karthik Gujja, MD; Daniel K. Han, MD; Vishal Kapur, MD; Sahil A. Parikh, MD; Bhaskar Purushottam, MD
10:40 am Fellows Case Presentation 4
Panelists: Karthik Gujja, MD; Daniel K. Han, MD; Vishal Kapur, MD; Sahil A. Parikh, MD; Bhaskar Purushottam, MD
10:50 am Contemporary Surgical Options for SFA and Popliteal Artery Disease Daniel K. Han, MD

11:00 am Q&A
11:05 am BREAK / VISIT SIMULATORS & EXHIBITS

VEINS/COROTID/DIALYSIS ACCESS/WOUND CARE | Moderator: TBD

11:10 am Deep Venous Thrombosis – Endovascular Options: Case Selection, Principles and Data Robert A. Lookstein, MD
11:25 am May-Thurner Syndrome Windsor Ting, MD
11:35 am Venous Reflux Disease Sung Yup Kim, MD
11:55 am Dialysis Access Management Peter L. Smith, MD
12:05 pm Carotid Stenting - Role in Management of Carotid Artery Disease Peter L. Faries, MD
12:15 pm Wound Care: Challenges and Option in the 21st Century John C. Lantis, MD
12:25 pm **WORKING LUNCH SYMPOSIUM | Moderator: TBD**
12:40 pm Guidewire Design and Principles
12:49 pm Intravascular Imaging: Role of IVUS in PAD
12:57 pm Directional Atherectomy
1:04 pm Pathway Atherectomy
1:11 pm Laser Atherectomy
1:20 pm CSI Atherectomy

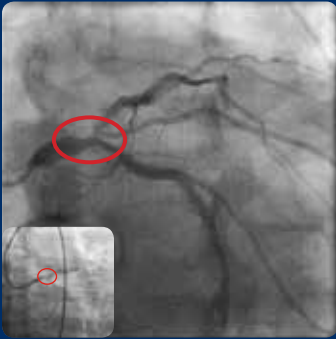
BELOW THE KNEE INTERVENTION, COMPLICATIONS AND MANAGEMENT | Moderators: TBD

1:30 pm Review of Contemporary Data to Guide Endovascular Therapy Phillip Green, MD
1:40 pm Tibial Tool Box, Access Principles and Angiosome Concept Vishal Kapur, MD
1:55 pm Case Presentation 1 - Antegrade Wire Escalation Anwar Babaev, MD
2:05 pm Case Presentation 2 - Dual Access James F. McKinsey, MD
2:15 pm Case Presentation 3 - Desert Foot Bhaskar Purushottam, MD
2:25 pm Fellow Case Presentation 5
Panelists: Anwar Babaev, MD; Phillip Green, MD; Vishal Kapur, MD; James F. McKinsey, MD; Bhaskar Purushottam, MD
2:35 pm Fellow Case Presentation 6
Panelists: Anwar Babaev, MD; Phillip Green, MD; Vishal Kapur, MD; James F. McKinsey, MD; Bhaskar Purushottam, MD
2:45 pm Complications and Bailout Strategies - Case Based Discussion Prakash Krishnan, MD
Panelists: Phil Green, MD; James McKinsey, MD; Peter Smith, MD; Anwar Babaev, MD
3:20 pm BREAK / VISIT EXHIBITS
3:30 pm Cadaver/Simulators (Group A/B)
Faculty: Peter L. Smith, MD; Vishal Kapur, MD; Karthik Gujja, MD; Bhaskar Purushottam, MD; Sachin Jain, MD
5:30 pm Awards/Closing Remarks Prakash Krishnan, MD

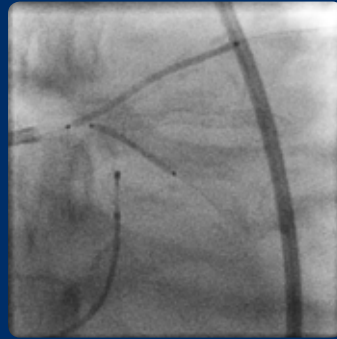
To register visit: www.cccsymposium.org

Coronary Case Studies

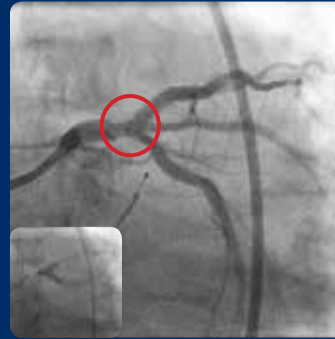
Complex Intervention of Unprotected Left Main Bifurcation



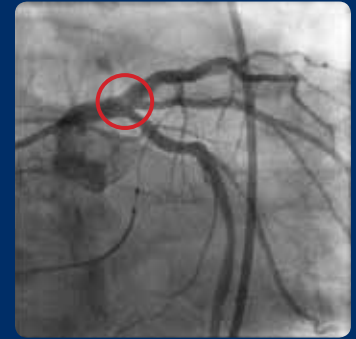
Distal LM bifurcation lesion



2 DES (Xience Alpine 4/38 in LM-LAD and 3.5/18 in LCx) deployed with mini-crush technique

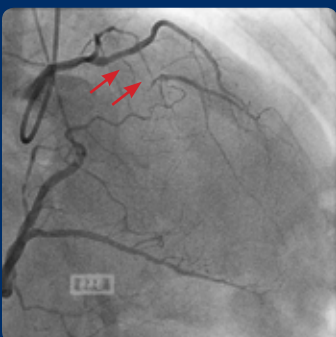


Post Two DES and Final Kissing Balloon

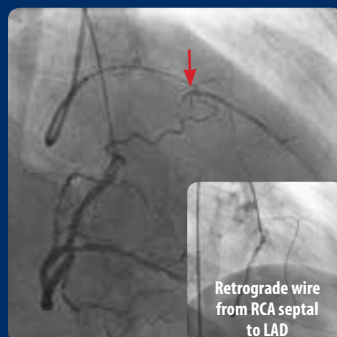


Final results of distal LM bifurcation stenting

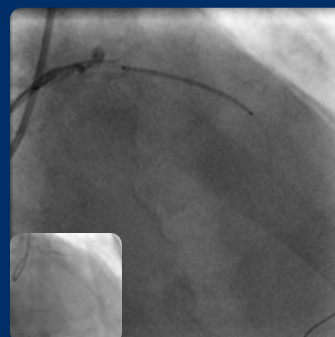
Retrograde Recanalization of Proximal LAD CTO Guided by Contralateral Injection



CTO of Proximal LAD seen with Contralateral Injection



Antegrade wire going into subintimal area



PTCA of LAD with 2/15 Trek balloon followed by 3/38 Promus DES

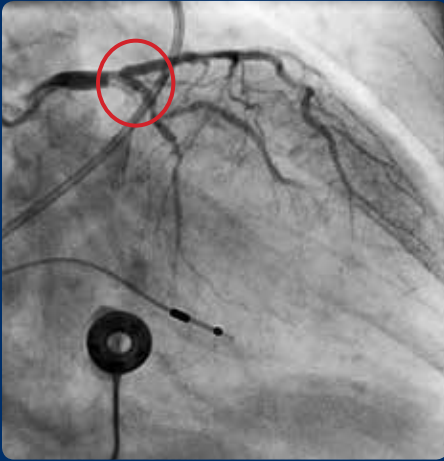


Final results

Valvular Case Studies

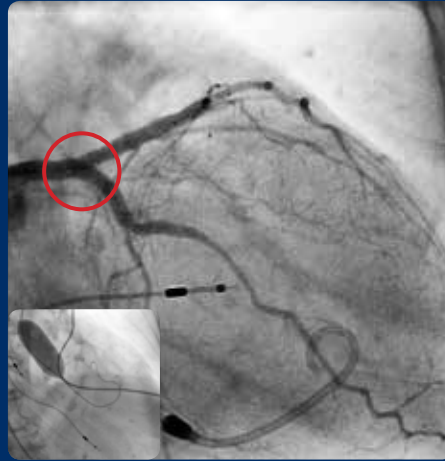
Coronary and Structural Heart Case Study 90-Yr Old Female with Complex LM Bifurcation and Severe AS

Oct. 2016

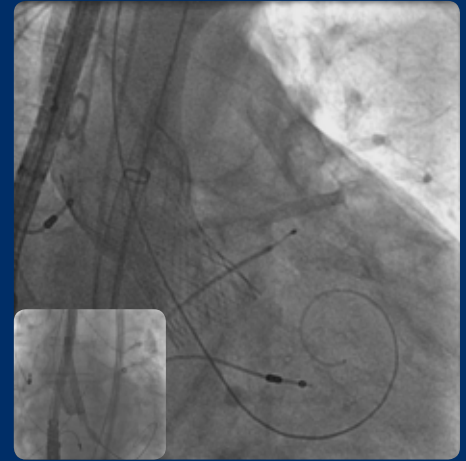


**Distal LM calcified
bifurcation lesion**

March 2017



**Post BAV and Impella with
Mini-Crush 2 Synergy DES**

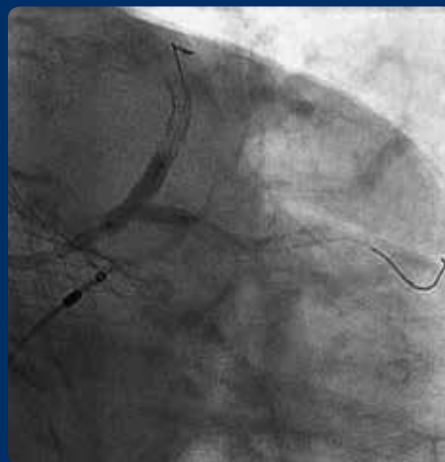


**29 mm Evolut-R
CoreValve Implanted**

July 2017



**DES restenosis of
distal bifurcation LM**



**Kissing Balloon dilatation
of distal LM**

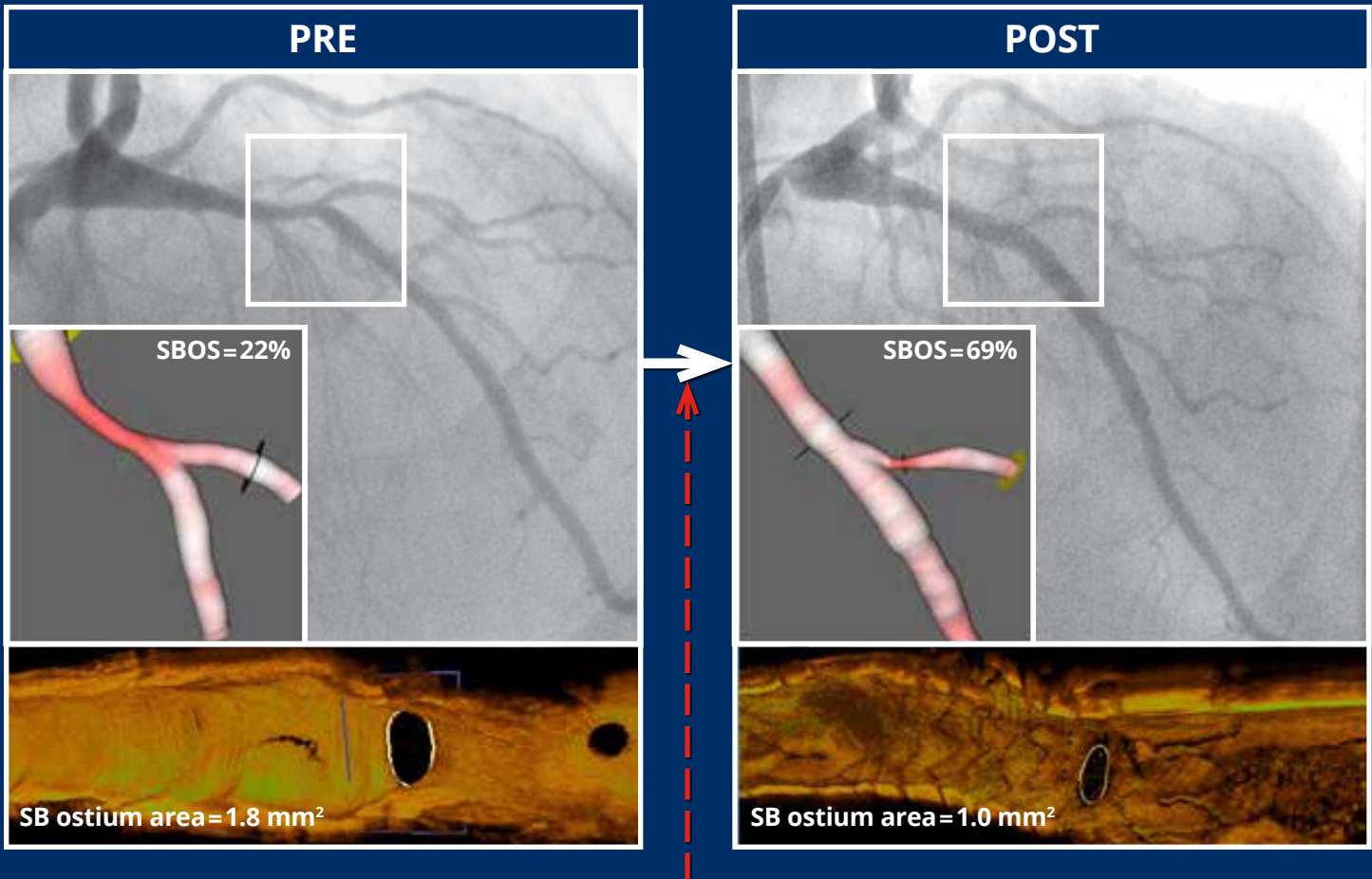


**Final results after restenting
(Xience Alpine) of LM-LAD
and PTCA of LCx**

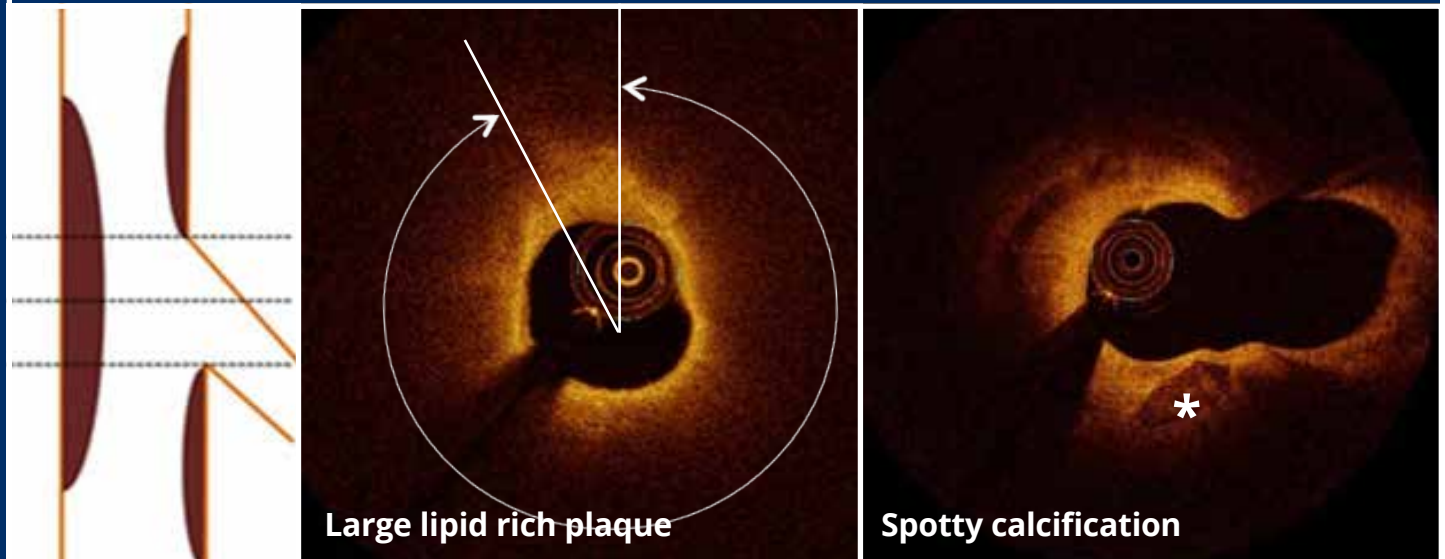
Imaging Studies

ORBID Study

(Three-dimensional Optical Coherence Tomography Guided Assessment of Side Branch Vessel after Provisional Main Vessel Stenting in Coronary Artery Disease)



Predictors of significant side branch ostial stenosis (SBOS) after provisional stenting



EVENING SYMPOSIUM

Complex High-Risk Interventional Procedures Symposium

Sheraton NY Times Square Hotel | Wednesday, June 13th | 6:30 pm - 9:15 pm

The Evening Symposium is not accredited for Continuing Medical Education (CME).

Supported By: Abbott, Abiomed, Inc. and Boston Scientific Corporation

6:30 pm REGISTRATION - HORS D'OEUVRES & COCKTAILS
New York Ballroom, Level 3

6:55 pm Basic Principals of Hemodynamic Support
Daniel Burkhoff, MD, PhD

7:15 pm New Metallic DES Platform: Biodegradable Polymer Update
Robert W. Yeh, MD

7:35 pm Approach to Calcific Lesions – Rationale for Use of Rotational Atherectomy
Jeffrey W. Chambers, MD

7:55 pm Clinical and Practical Guidelines for LV Support
John M. Lasala MD, PhD

8:15pm Utility of FFR & iFR Imaging in High Risk PCI Patients
Carlo Di Mario, MD, PhD

8:30pm OCT: Emerging Data and Application
Amir Lerman, MD

8:45 pm Protected PCI in Clinical Practice: Case-Based Examples
Samin K. Sharma, MD

9:10 pm Panel Discussion and Q&A
Faculty and Audience

9:15 pm CLOSING REMARKS
Samin K. Sharma, MD

Symposium Supporters

The symposium is being funded in part through educational grants and exhibit fees from medical device and pharmaceutical industries. The following is a list of 2017 supporters and exhibitors. A complete list of 2018 contributors and appropriate acknowledgement will be given to all supporters in the course syllabus. We appreciate their participation in this conference and their support of continuing medical education.

Abbott

Medtronic

Boston Scientific Corporation

Cook Medical

Philips Image Guided Therapy

Bard Peripheral Vascular

Edwards Lifesciences

Cardiovascular Systems, Inc.

Terumo Interventional Systems

Abiomed, Inc.

Chiesi

AstraZeneca

Cordis,

Bracco Diagnostics

a Cardinal Health Company

Roxwood Medical

Amgen

Asahi-Intecc USA

B. Braun Medical

Cardiva Medical

Corindus Vascular Robotics

Gilead Sciences

Gore & Associates

Janssen Pharmaceuticals

Maquet

Medicure Pharma

Ostial Corporation

Siemens Healthineers

TriReme Medical

Teleflex



Registration Information

DISCOUNT REGISTRATION PRIOR TO MAY 18TH SAVE UP TO \$150!

Full Registration Rates

The Full Registration Fee for this CME activity is \$400.00 for physicians who are members of SCAI (Society for Cardiovascular Angiography and Interventions). The fee for physicians who are non-members of SCAI is \$600.00. A reduced registration fee of \$200.00 is available for Residents, Nurses, Technicians and Mount Sinai Affiliates. The registration fee for Industry Personnel is \$400.00. Your full registration fee includes attendance at the Tuesday, Wednesday, Thursday and Friday Sessions, course materials, continental breakfasts, refreshment breaks, lunches and the Wednesday Evening CHIP Symposium.

Fellows registration fees are WAIVED!

Daily Registration Rates

Complex Coronary/Structural Heart Symposium

Thursday, June 14th one-day rate is \$200.00 for physicians who are members of SCAI. The one-day registration fee for physicians who are non-members of SCAI is \$300.00. A reduced registration fee of \$100.00 is available for Nurses, Technicians and Mount Sinai Affiliates. Fellows and Residents fees waived. The registration fee for Industry Personnel is \$200.00.

Nurse/Technologist Symposium

Friday, June 15th, one-day rate is \$75.00.

Cancellation / Refund Policy

All cancellations must be confirmed in writing to The Page and William Black Postgraduate School by (06/01/2018) for tuition refund. An administrative fee of \$50.00 will be retained from all registrations. No refunds will be made on cancellations after this date or for 'no shows'. The course director / department reserve the right to cancel an event. The event sponsors are not responsible for any airfare, hotel, or other costs incurred by registrants. Name changes must be done prior to the cancellation date. Name changes are not permitted after the cancellation date.



Symposium Location

The Mount Sinai Hospital

1468 Madison Avenue (100th St)
Annenberg Building
New York, NY 10029

Hotel Accommodations

Sheraton New York Times Square Hotel

811 Seventh Avenue, 53rd Street
New York, NY 10019
Guest Telephone: (212) 581-1000



A block of rooms has been reserved at the Sheraton NY Times Square Hotel for attendees of the 2018 CCVC Symposium at a special reduced rate of \$369.00 single or double occupancy (per night), plus tax. To receive the discounted room rate, reservations must be confirmed by Thursday, May 10, 2018. After that date, reservations will be subject to space and rate availability. Please note, June is a very busy time in NYC. Hotel rooms

will be scarce and your room rate will increase if your reservations are not made prior to the cut-off date.

Please contact the Reservations Department directly at (212) 581-1000 to request accommodations. When making your reservation, please be sure to mention that you will be attending the Mount Sinai Hospital Cardiology Symposium.

You may also book your room reservations directly online by visiting our website at www.cccsymposium.org.

Symposium Shuttle Service

Please note, complimentary shuttle transportation will be provided throughout the day from the Sheraton NY Times Square Hotel and The Mount Sinai Hospital on Tuesday, June 12th, Wednesday June 13th, Thursday, June 14th and Friday June 15th. Shuttles will continually run between the hotel and hospital throughout the day, and will depart each location approximately every half hour.

Airport Transportation

The Sheraton New York Times Square Hotel is located in midtown Manhattan. The hotel is 45 minutes from LaGuardia Airport and 60 minutes from the John F. Kennedy International Airport. Yellow Medallion Taxi service is available from LaGuardia Airport for approximately \$45.00 (one-way) and is available from the JFK International Airport for approximately \$75.00 (one-way). Rental car services are available at both airports. Hotel garage parking is available for \$51.00 per 24-hours.

Registration Form

To register for the 2018 Live Symposium of Complex Coronary, Valvular & Vascular Cases complete this form and return to The Icahn School of Medicine at Mount Sinai

The Icahn School of Medicine at Mount Sinai
One Gustave Levy Pl, Box 1193
New York, New York 10029
PH: (212) 731-7950



VISIT OUR WEBSITE TO:

- View high quality video highlights from the 2017 Symposium including lectures and case demonstrations
- Join user discussion forums
- View live cases via **Live Webcasts**

Contact Information

Name: _____ Institution: _____

Mailing Address: _____ NPI #: _____

City: _____ State: _____ Country: _____ Zip/Postal Code: _____

Mobile Phone: (_____) _____ Office Phone: (_____) _____

Email Address (*required for registration confirmation*): _____

Professional Degree or Credential: ☐ MD ☐ DO ☐ PhD ☐ RN ☐ Other _____

Early Registration Savings!

**REGISTRATION RATES ARE DISCOUNTED
25% OFF THE FULL REGISTRATION LISTED
PRICE IF RECEIVED PRIOR TO MAY 18, 2018**

Fellows Fees Waived!

In order to receive the Complimentary Fellows Full-Meeting Registration or apply for participation in one of the Fellows Courses, please visit the website at cccsymposium.org. Please contact Jennifer Berens at jennifer@gaaffneyevents.com with any questions. Complimentary registration is limited and on a first-come, first-served basis.

Full Symposium Registration

**Complex Coronary, Valvular & Vascular Cases
& LINC Mount Sinai Symposium**

\$600.00 ☐ Physician, Non-Member of SCAI
\$400.00 ☐ Physician, Member of SCAI
\$400.00 ☐ Industry Professional
\$200.00 ☐ Nurse, Tech, Mount Sinai Affiliates

**As a Full-Registration participant, please check the day(s)
you will be attending (REQUIRED):**

- ☐ Tuesday, LINC Mount Sinai Endovascular Symposium
☐ Wednesday, LINC Mount Sinai Endovascular Symposium
☐ Thursday, Coronary / Structural Heart Symposium
☐ Friday, Cardiovascular Nurse / Technologist Symposium

Interventional Cardiology Board Review Course
(Registration and Application Available Online)

Endovascular Fellows Course
(Registration and Application Available Online)

Complex High-Risk Interventional Procedures Symposium

Will you attend the Wednesday Evening Symposium at the Sheraton New York Times Square Hotel? ☐ YES ☐ NO

Gala Event

Will you attend the Thursday Evening Gala Cruise around Manhattan? (Complimentary when paying Full Registration Fees) ☐ YES ☐ NO
Will you be bringing a guest? (\$100.00 Additional fee per guest) ☐ YES ☐ NO Number of guests: _____

Method of Payment

☐ Check (*payable to The Icahn School of Medicine at Mount Sinai*) Amount: \$ _____ ☐ Credit Card: ☐ VISA ☐ MasterCard ☐ American Express

Credit Card Number: _____ Expiration Date: _____ CVC: _____

Name as it appears on credit card: _____ Signature: _____

Office Use Only: Check No. _____ Amount: \$ _____ Date: _____



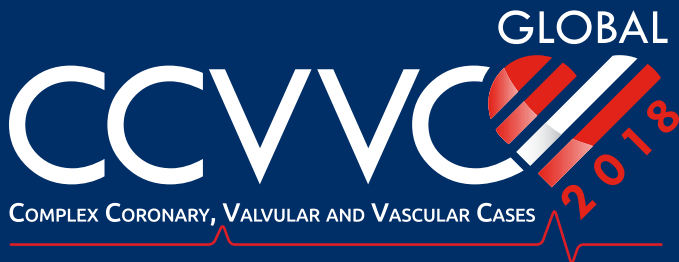
gaffneyevents

15321 Main Street NE
P.O. Box 219
Duvall, WA 98019

PRESORTED
FIRST CLASS MAIL
U.S. POSTAGE
PAID
PERMIT NO. 315
SEATTLE, WA



***To Register and Obtain Additional
Symposium Details **Scan Here!*****



JUNE 12-15, 2018

New York, New York

Celebrating
50
years
1968-2018



Icahn School
of Medicine at
Mount
Sinai

Innovation in Science and Medicine



www.cccsymposium.org

